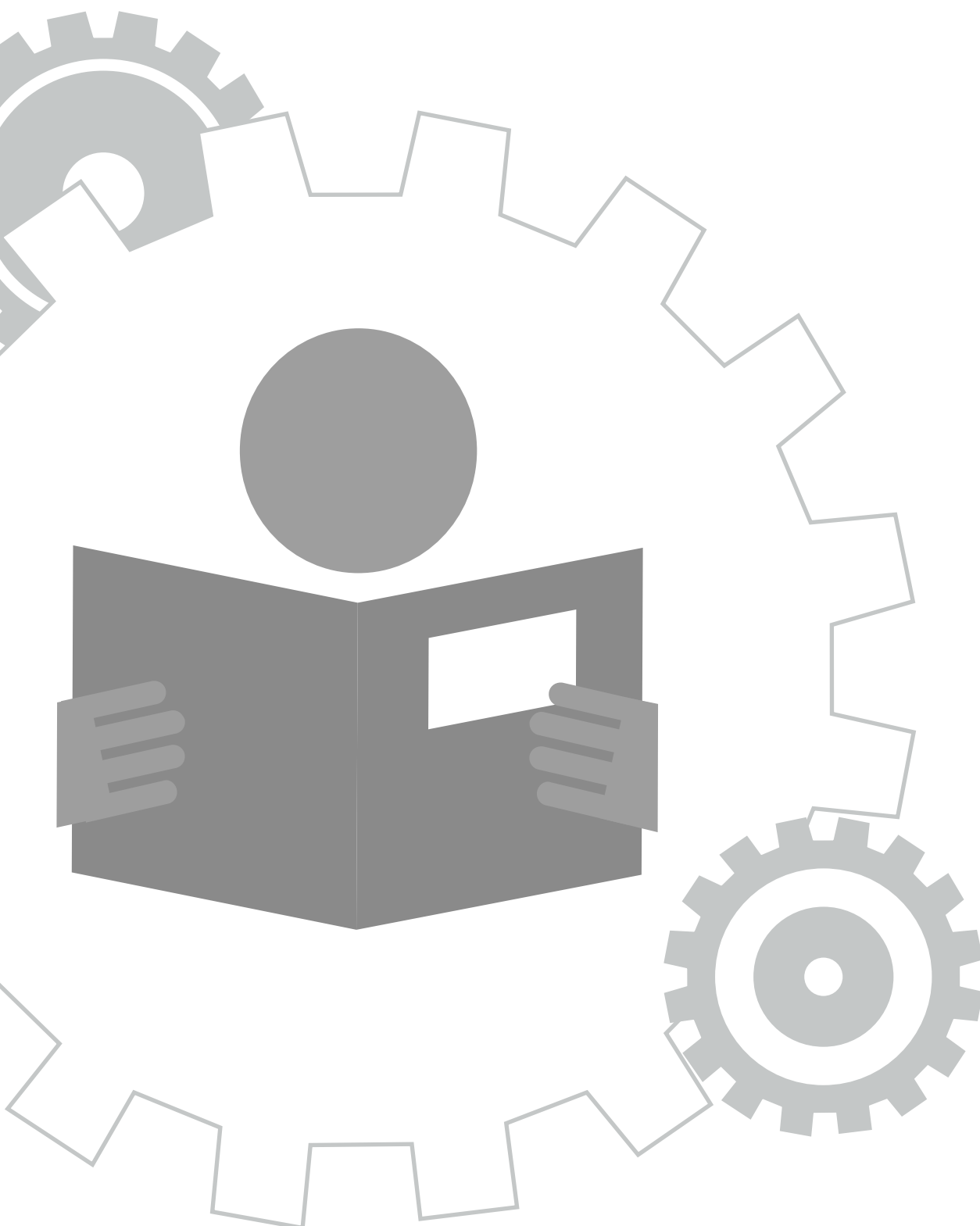


record Speedgate swing slim



User manual

Translation of the original manual

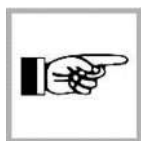
Table of content

1	Safety.....	3
1.1	Presentation of warning signs.....	3
1.2	Intended purpose of use.....	3
1.3	General hazards	3
1.4	State of technology	6
1.5	Personal protective equipment	6
1.6	Spare parts and liability	7
2	General information	8
2.1	Purpose and use of the instructions	8
2.2	Copyright	8
2.3	Product identification	8
2.4	Document identification	8
2.5	Manufacturer agtatec ag.....	8
2.6	Target groups	8
3	Description.....	10
3.1	Units.....	10
3.2	Description.....	12
3.3	Alternative options and accessories	13
3.4	Product Identification	13
4	Specifications	15
4.1	Dimensions and wheights.....	15
4.2	Technical specifications.....	16
5	Operation.....	17
5.1	Using the Speedgate	17
5.2	Instruction for use	17
5.3	Normal Use.....	19
5.4	Alarm Conditions	19
5.5	Wrong Way Detection.....	20
5.6	Tailgating	20
5.7	Passage management.....	21
6	Servicing and maintenance	22
6.1	General care	22
6.2	Routine maintenance	22
7	Malfunctions	24
7.1	Fault Finding	24
7.2	Fault diagnosis.....	24
7.3	Fault code tables	25
8	Taking out of service and disposal.....	28
8.1	Decommissioning	28
8.2	Dismantling and disposal.....	28

1 Safety

1.1 Presentation of warning signs

Various symbols are used in this guide for easier understanding:



NOTICE

Useful advice and information to ensure correct and efficient workflow of the system.



IMPORTANT

Specific details which are essential for trouble-free operation of the system.



IMPORTANT

Important details which must be read for proper function of the system.



CAUTION

Against a potential hazardous situation that can lead to minor personal injury and property damage.



WARNING

Against a latent hazardous situation that can lead to severe injuries or death and cause substantial property damage.



DANGER

Against an imminent hazardous situation that can lead to severe injury or death.



DANGER

Against an imminent or latent hazardous situation that could lead to electric shock and cause serious injury or death.

1.2 Intended purpose of use

The system is designed exclusively for use as a pedestrian passage. The installation may only occur in dry areas. If there are deviations then proper waterproofing and water drains will be required on-site.

Any other application or use beyond this purpose is not considered to be an intended purpose. The manufacturer bears no liability for any resulting damage; the operator alone shall bear the associated risk.

The intended purpose also includes observation of the operating conditions specified by the manufacturer, in addition to regular care, maintenance and repair.

Interventions in or alterations to the installation performed by non-authorized maintenance technicians exclude the manufacturer's liability for consequential damages.

1.3 General hazards

The following section lists hazards that can be caused by the system even when used as intended.

To reduce the risk of malfunction, damage to property or injury to persons and to avoid dangerous situations, the safety instructions listed here must be observed.

The specific safety instructions in the other sections of this manual must also be observed.



IMPORTANT

The country-specific regulations must be observed and complied with!



IMPORTANT

To avoid malfunctions, moving objects such as flags or parts of plants must not be allowed to enter the detection range of the sensors.



CAUTION

Risk of malfunctions, material damage or injury due to improper settings!

- a) Improper settings can lead to malfunctions, material damage or personal injury.
 - ⇒ Do not disconnect the system from the power supply overnight.
 - ⇒ Settings should only be made by personnel qualified to do so.
 - ⇒ Do not disassemble, put out of operation or manipulate safety devices.
 - ⇒ Have faults rectified by specialist personnel or by personnel qualified to do so.
 - ⇒ Have service and maintenance carried out according to locally applicable regulations or according to a maintenance contract.



CAUTION

Risk of malfunctions, material damage or injuries due to insufficient or missing cleaning or care!

- a) Insufficient or inattentive cleaning or care of the system can lead to malfunctions, damage to property or injury to persons.
 - ⇒ Check the sensors regularly for dirt and clean them if necessary.
 - ⇒ Regularly remove dirt accumulations in the floor rail or under the floor mat.
 - ⇒ Keep the system free of snow and ice.
 - ⇒ Do not use aggressive or caustic cleaning agents.
 - ⇒ Use road salt or loose chippings only conditionally.
 - ⇒ Lay the floor mat without folds and flush with the floor.
 - ⇒ Equipment required for cleaning purposes such as ladders or similar must not be leaned on or attached to the system.



CAUTION

Risk of material damage or injury due to unforeseen opening, closing or turning of the door!

- a) The door can open, close or turn unexpectedly. This may result in damage to property or injury to persons.
 - ⇒ No persons may be present in the opening area of the system.
 - ⇒ Ensure that moving objects such as flags or parts of plants do not enter the detection range of the sensors.
 - ⇒ Do not make any settings on the control unit when the system is in use.
 - ⇒ Have faults rectified immediately by specialist or personnel qualified to do so.
 - ⇒ Remove objects from the opening area.
 - ⇒ Do not disassemble, put out of operation or manipulate safety devices.
 - ⇒ Do not rush through a closing system.



CAUTION

Risk of bruising and severing of limbs!

- a) If the system moves, careless behaviour can lead to serious injuries to limbs or severance of limbs.
 - ⇒ Do not reach in when parts of the system are moving.
 - ⇒ Keep a distance when parts of the system move.
 - ⇒ Do not bump into or touch the system when it is moving.
 - ⇒ Do not open or remove protective covers during operation.
 - ⇒ Do not permanently remove covers from the system.
 - ⇒ Only carry out inspection, service, maintenance and cleaning when the system is stationary and switched off.



CAUTION

Danger of material damage or injury due to non-functioning safety devices!

- a) If safety devices are not functioning, manipulated or put out of operation, there is a risk of damage to property or injuries that can lead to death.
 - ⇒ Never disable or manipulate safety devices.
 - ⇒ Have inspection, service and maintenance of the safety devices carried out according to local regulations or according to a maintenance contract.



CAUTION

Danger of malfunctions, damage to property or risk of injury if used by unauthorised persons!

- a) If unauthorised persons use the system, there is a risk of malfunction, damage to property or injury to persons.
 - ⇒ Children under 8 years of age may only use the system under supervision.
 - ⇒ Children must not play with or on the system or clean and maintain it.
 - ⇒ Persons with limited physical, sensory or mental abilities as well as persons with insufficient knowledge or experience may only use the system under supervision or must have received and understood instructions to do so.



DANGER

Danger to life due to electric current!

- a) In case of contact with live parts, there is an immediate danger to life due to electric shock. Damage to or removal of the insulation or individual components can be life-threatening.
 - ⇒ Before starting work on active parts of electrical systems and equipment, ensure that all poles are voltage free and that this is maintained for the duration of the work.
 - ⇒ Keep moisture away from live parts. This can lead to a short circuit.
 - ⇒ Never bridge fuses or put them out of operation.
 - ⇒ Do not connect the power supply until all work has been completed.
 - ⇒ Have work on the electrical system performed by qualified personnel only.



DANGER

Danger to life due to non-functioning safety devices of the fire protection system!

- a) If safety devices of the fire protection system do not function properly, there is a risk of serious or fatal injuries.
 - ⇒ Never disconnect the fire protection system from the power supply overnight.
 - ⇒ Do not disassemble, put out of operation or manipulate safety devices.
 - ⇒ Do not remove safety instructions on the system.
 - ⇒ Never block, hold open or otherwise prevent fire doors from closing.
 - ⇒ Have inspection, service and maintenance of the fire protection system carried out in accordance with locally applicable regulations or according to a maintenance contract.
 - ⇒ Have the fire protection system checked and maintained according to the state of the art.

1.4 State of technology

This system was developed using state of the art technology and officially recognized technical safety regulations. The system, depending on its options and diameter, comply with the requirements of the Machine Guidelines 2006/42/EG as well as EN 16005 and DIN 18650 (D).

Nevertheless, danger may arise if not used as intended.



IMPORTANT

Installation, commissioning, inspection, maintenance and repair work may only be conducted by qualified, trained and authorized technicians.

After commissioning or repair work, fill in the check list and give it to the customer for safe keeping.

We recommend obtaining a service agreement.

1.5 Personal protective equipment

Personal protective equipment is used to protect persons from adverse effects on safety and health. Personnel must wear personal protective equipment during the various work activities on and with the system.

Personal protective equipment is explained below:



Hearing protection is used to protect the hearing from noise. As a rule of thumb, hearing protection is compulsory from when normal conversation with other people is no longer possible.



The head protection serves to protect against falling and flying parts and materials. It also protects the head from bumping into hard objects.



Protective goggles protect the eyes from flying parts, dust, splinters or splashes.



Protective gloves are designed to protect hands from friction, abrasions, punctures or serious injury and from burning caused by contacting hot surfaces.



Safety shoes protect the feet from crushing, falling parts and slipping on surfaces. The puncture resistance of the shoes ensures, that pointy objects do not penetrate the foot.



The high-visibility vest is used to make the personnel stand out and therefore to be seen. With improved visibility and attention, the high-visibility vest protects personnel in busy work areas from collisions with vehicles.

Depending on the place of work and the working environment, the protective equipment varies and must be adapted accordingly. In addition to protective equipment for specific work, the work site may require other protective equipment (for example a harness).

In hygiene-protected areas, special or additional requirements of personal protective equipment may be required. These requirements must be considered when choosing personal protective equipment. If there is any uncertainty regarding the choice of personal protective equipment, the safety officer must be consulted at the place of work.

1.6 Spare parts and liability

Reliable and trouble free operation of the door is only guaranteed when using parts that were recommended by the manufacturer. The manufacturer declines any liability for damages resulting from unauthorized modifications to the door or the use of parts that are not permitted.

2 General information

2 General information

2.1 Purpose and use of the instructions

These instructions are an integral part of the system and enable efficient and safe handling of the system. In order to ensure proper functioning, the instructions must be accessible at all times and kept in the immediate area of the system.

Although only the male form has been chosen for reasons of better legibility, the information refers to members of both sexes.

The operator must have read and understood the manual before starting any work. The basic requirement for safe working is to follow the safety instructions and the handling instructions. In addition, the local regulations and safety rules apply.

The manual can be handed over in extracts to instructed personnel who are familiar with the operation of the system.

The illustrations are for basic understanding and may differ from the actual presentation. Specific representations are contained in the drawings.

2.2 Copyright

The copyright of the instructions remain at:

agtatec ag

It is prohibited to reproduce, distribute or use the manuals for purpose of competition without the written authorization of agtatec ag.

Violation of the here stated copyrights will be prosecuted and fined with compensation of damage.

Differences between product and manual are thereby possible.

2.3 Product identification

The nameplate located on the door provides accurate identification of the product.

2.4 Document identification

Name: BAL_Speedgate_swing_slim_EN_1V0_REC_102-905401002

Version: 1.0

Article nr.: 102-905401002

Publication date: 01/2021

2.5 Manufacturer agtatec ag

agtatec ag

Allmendstrasse 24

CH – 8320 Fehraltorf

Switzerland

Phone: +41 44 954 91 91

Fax: +41 44 954 92 00

2.6 Target groups



CAUTION

Risk of injury if personnel are insufficiently qualified!

If unqualified personnel work on the system or are in the danger zone of the system, dangers may arise which can cause serious injuries and considerable damage to property.

- a) All work must be carried out by qualified personnel only.
- b) Keep unqualified personnel away from danger areas.

This operating manual is intended for the target groups listed below:

- Operating entity of the system:
the person who is responsible for the technical maintenance of this system
- Operator of the system:
the person who operates the system every day and has been suitably instructed

3 Description

3 Description

3.1 Units

The Speedgate is designed for the control and management of passage flow, in a bi directional manner. The parameters and operations are controlled by the record NEP Lite board the position of the wing is governed by a state of the absolute angular encoder. The wing movement is operated by a 24 Vdc motor. The Speedgate can be either controlled by an Access Control System mounted on the unit, or via remote control. The two directions of transit A and B can be configured in the following three modes.

- Unlock Mode - All persons are allowed transit.
- Lock Mode- Transit is forbidden.
- Reader Control Mode- Transit is only allowed for persons who have been given permission by a badge reader.

The Speedgate will be available in three base models, each of these base models will also have a choice of customizing.

BA Basic



The BA Basic is available in three sizes:

- • 1200 mm
- • 1400 mm
- • 1800 mm

The lids are finished in black technopolymer, square ended, but may be customised.

EV Evolution



The EV Evolution is available in three sizes:

- 1200 mm
- 1400 mm
- 1800 mm

The lids are finished in black technopolymer as standard,(or Corian as an option) round ended.

**NOTICE**

Note-The EV is fitted with extended cladding and ambient (static) lighting to illuminate the static glass. Lights are available in two fixed colours, white or blue. Please note that the EV is NOT available with the additional safety sensor option at this time.

3 Description

DS Series (Premium)



The DS is be available in one size:

- 1800 mm

The unique Gull Wing shaped lids are made from Polyurethane foam (RIM) Baydur 60 - 600 kg/m³ in matt grey aluminium colour as standard, but may be customised in a selection of different paint colours.

The DS series also features the LED tracers , that act as passage indicators.

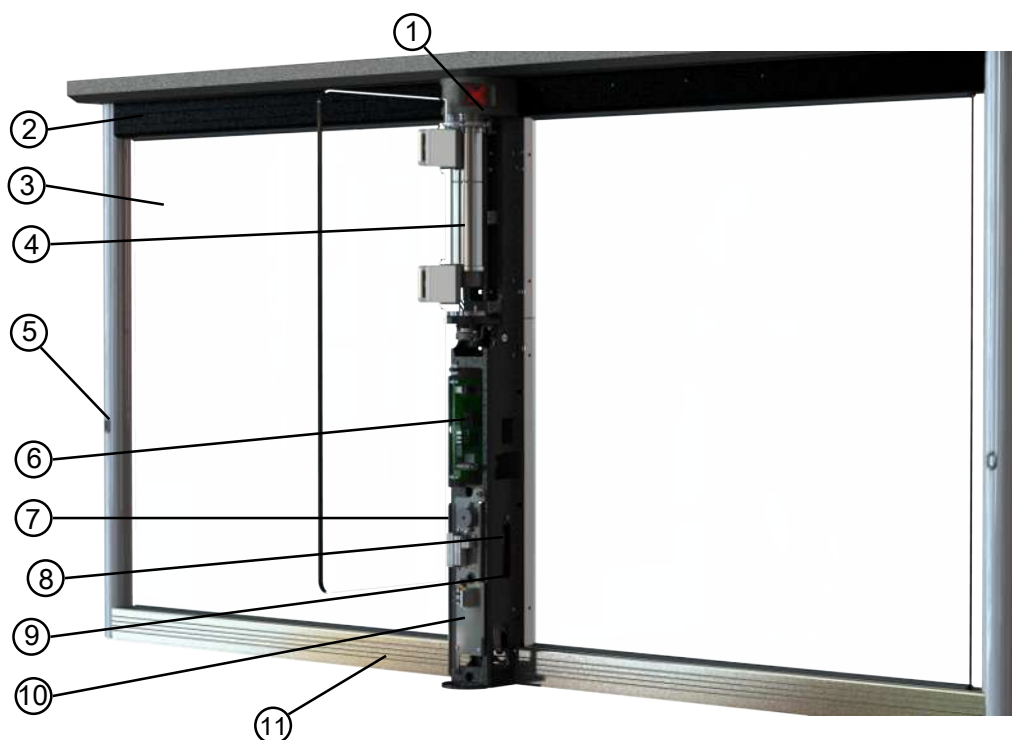
Note-The EV is fitt ed with extended cladding and ambient (static) lighting to illuminate the static glass. Lights are available in two fixed colours, white or blue. Please note that the EV is NOT available with the additional safety sensor option at this time.

3.2 Description

The unit is supplied to integrate fully with many proprietary readers, a variety of outputs and inputs i.e. Passage confirmed for updating and anti-pass back system, inhibits and fire alarm. All that is required is a GO signal of >0.5 / <1 second from the access control technical system (voltage-free contact normally open).

Flexibility of Design

The integrated design makes the Speedgate Swing Slim simple to install with a minimum of intrusion to the existing environment. This concept allows architects and designers the ability to design a security system that fits their requirements for any situation. The central column forms the basis of the system



Item	Description
1	PCW Top Case
2	Sensor Rail
3	Glass wing
4	Rotor assebly
5	Wheel chair sensor
6	NEP lite Board
7	Power supply unit
8	RS232
9	On/Off rocker switch
10	Incoming mains connection
11	Bottom safety curtain

3.3 Alternative options and accessories

- Alternative finishes and materials.
- Light curtain safety kit.
- Card reader integration.
- Clear acrylic wings.
- Remote control systems.
- Wheelchair Sensor.
- High glass upto 1.8M

3.4 Product Identification

Each unit will have an Identification label located as shown in the picture below on the label you will see the following information.

- PN
- Model
- Volt

3 Description

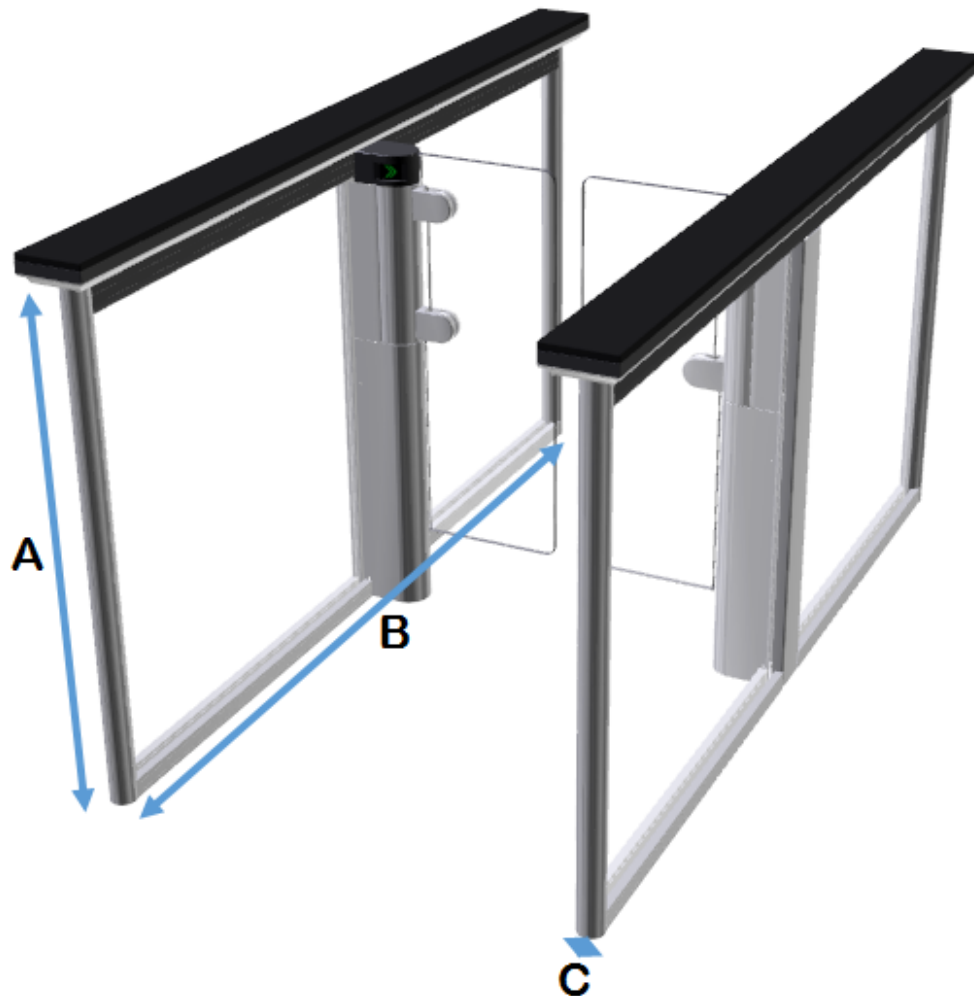
- Hertz
- Ampere

If you need to contact record regarding this unit then we will need to know the information on the label so that we can identify the exact model of the unit and the serial number.



4 Specifications

4.1 Dimensions and weights



Model	Width	A	B	C*	Weight Side cabinet	Weight Centre cabinet
Standard 1200	940	600	1200	120	60	75
Wide 1200	940	900	1200	120	63	81
Standard 1400	940	600	1400	120	65	80
Wide 1400	940	900	1400	120	68	86
Standard 1800	940	600	DS 1824 BA/EV 1870	120	75	90
Wide 1800	940	900	DS 1824 BA/EV 1870	120	78	96

Dimensions are in mm and net weight are in kg.

*Add 50 mm for side cabinet or 100 mm for centre cabinet due to column rotor.

4 Specifications

4.2 Technical specifications

Drive	24V DC Motor with gearing
Orientation	Bi Directional
Materials	Rotor column and end leg: 304 grade Stainless Steel Chassis plinth: Anodised Aluminium Glass Inlay: 10 mm thick. Glass Wing: 10 mm Toughened Glass Clear Acrylic. Lid: black technopolymer , Corian or Polyurethane foam (RIM) Baydur 60 - 600 kg/m3 in matt grey aluminium colour
Method of Operation	On receipt of a signal from the access control system, or push button, the panels will open. If an unauthorised person attempts to tailgate or tries to enter from the opposite direction – the system detects and closes the unauthorised passage and activates an alarm.
Power Failure	Gate Rotates freely with any power loss
Power Supply Voltage	230VAC 50HZ / 115VAC 60Hz
Tolerance	±15% of the nominal value
Maximum power supply	270 W
Power rating	20VA standby - 120VA in operation
Logic voltage	24 Vdc
Fire Alarm	Input for voltage free contact
Interface	27 digital settings Interface I/O programmable via parameters RS232 RS485
Mains Input Fuse	2A
Operating Temperature	+5°C - +40°C RH 95% non condensing, Internal Only
Transportation and Storage	-25 to +55° C
Relative Humidity	95% Maximum
MCBF	4 million cycles N/C ,5 million cycle N/O
MTTR	Less than 30 minutes
IP Degree of Protection	IP20
Noise Level	Less than 55dB(2)

5 Operation

5.1 Using the Speedgate

The Speedgate Swing Slim is unlocked by presenting a personalised identity card or device to the access control reader (Supplied by others). It can also be unlocked by depressing a casework or remote reception push button, if fitted, or Free Passage configuration. This will activate the mechanism and open the wings in the authorized direction, rendering the Speedgate Swing Slim ready for use by walking through the walkway passage in the authorised direction.

Should the user decide not to proceed with the passage, the Speedgate Swing Slim will remain unlocked for a predetermined time after which it will 'time out' and reset the unit making it available for the next person. After the passage is complete the mechanism will be reactivated automatically to operate the wings to the closed position.

Always check the PCW lights mounted on the top of the Speedgate Swing Slim column for rite of passage, i.e. Red Cross denotes opposite direction has rite of passage or Green Chevron denotes rite of passage.

Should the Speedgate Swing Slim be used in the incorrect manner i.e. out of passageway sequence, the wings will close and an alarm will sound. Do not panic, retreat from the walkway, and wait for the alarm to stop and the system to reset automatically. During the alarm stage the PCW lights will flash, after reset check the status lights for rite of passage. Do not attempt to follow a person through the Speedgate Swing Slim if you do not have an authorisation. This is known as Tailgating, and will activate the controller to close the gates between the authorised and unauthorised user. The Speedgate Swing Slim will now go into the alarm and reset phase.

If the Speedgate Swing Slim and access control system has been configured for multiple authorisations, known as Stacking, the users may proceed in close proximity after the preceding passage occupant. Again, the PCW lights should be checked for rite of passage. Should any item become caught in the wings, STOP, DO NOT keep forcing through in the same direction.

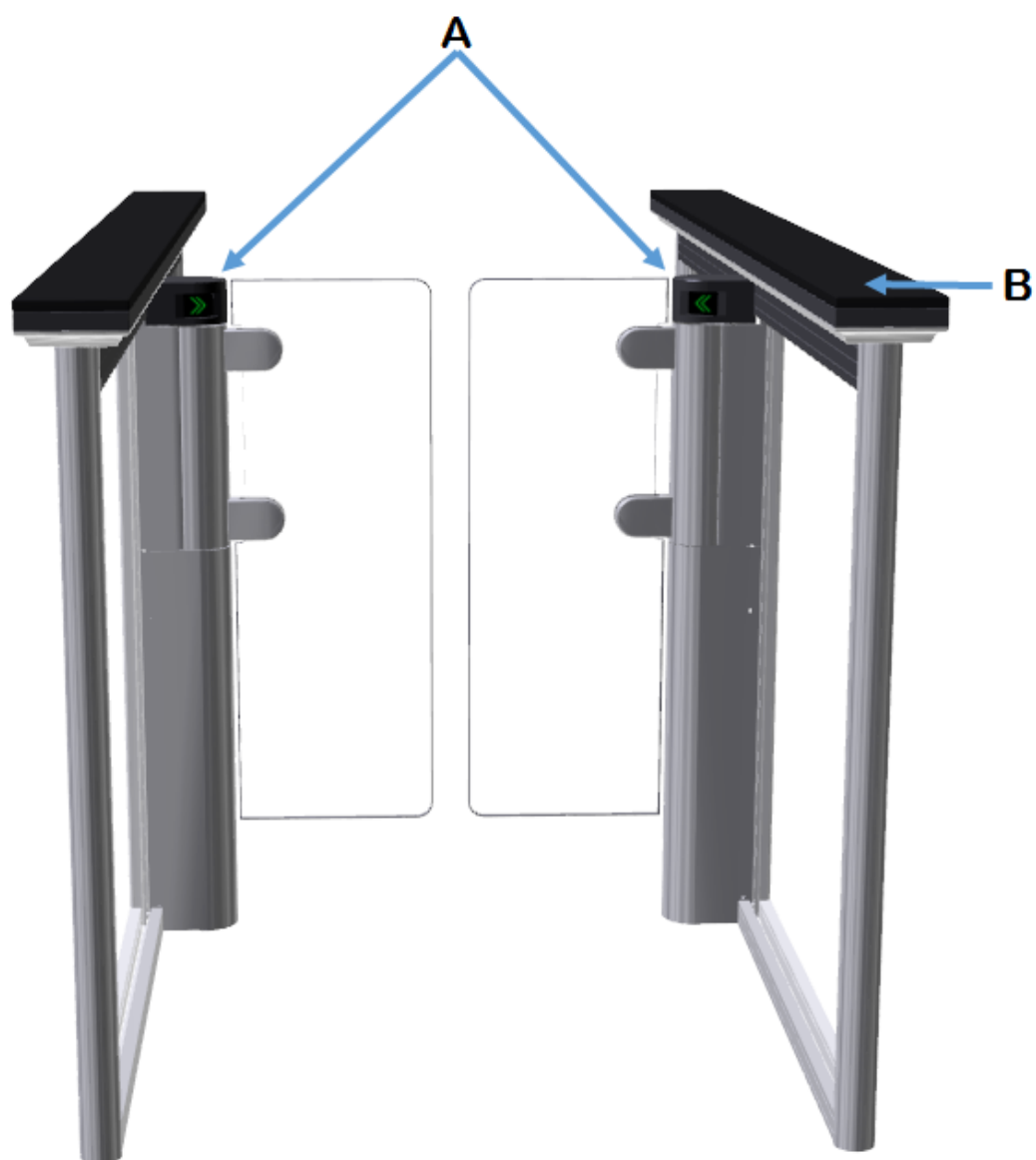
5.2 Instruction for use

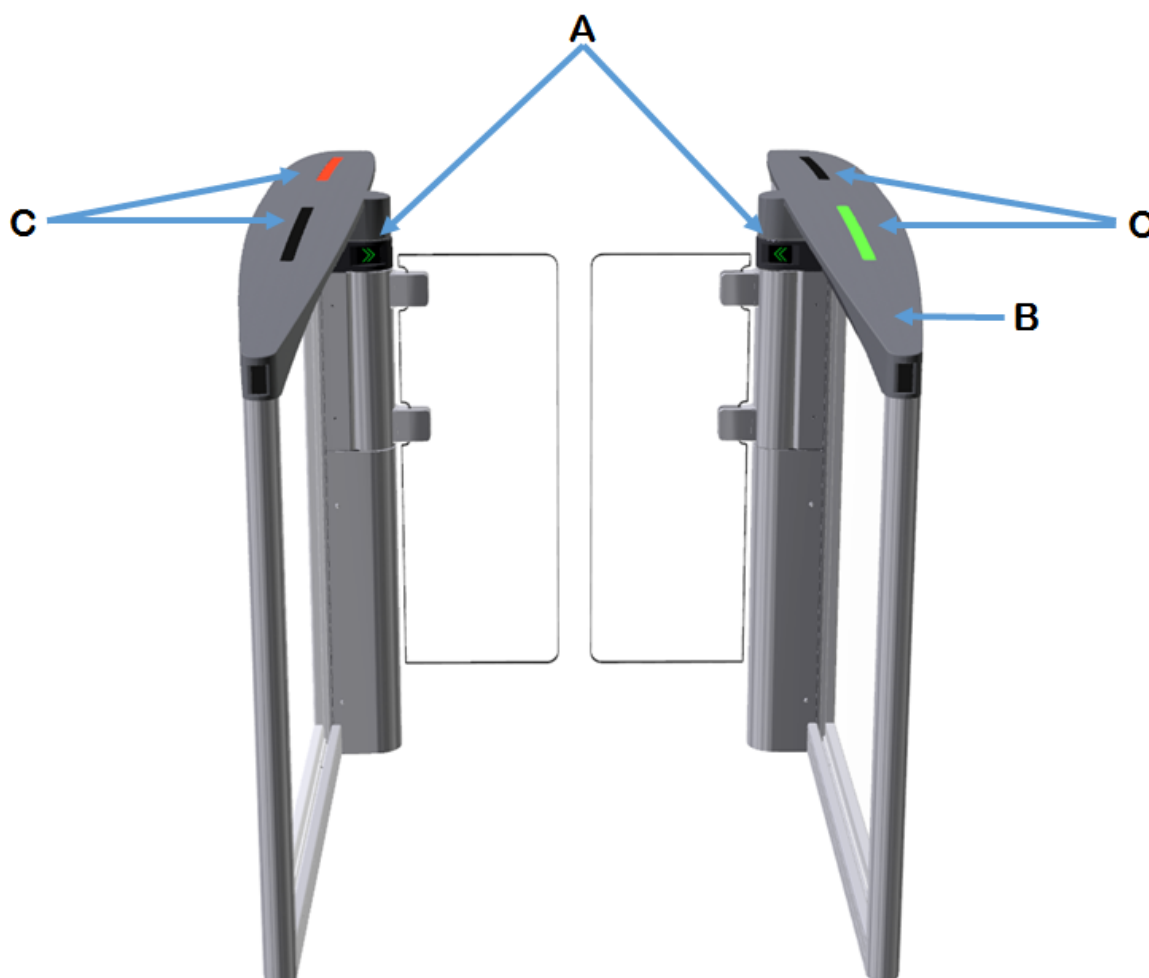
Below are simple instructions on how to use the Speedgate Swing Slim security barrier. If you follow the visual instructions given by the illumination display unit it should not take you long to get used to using the Speedgate Swing Slim. On the BA and EV models a small white LED pulses in the lid either end to indicate the position of the card reader.



NOTICE

The product has been selected as a security deterrent, it is not designed to prevent you from entering. It is installed to protect you and the company's assets from unauthorized persons gaining access.





Item	Description
A	PCW'S
B	Readers position (Mounted within the lid) + (pulsing LED indicator) BA, EV Only
C	Tracer LED 'S' DS Only
D	Reader Position only (Mounted within the lid)

5.3 Normal Use

When the Speedgate Swing Slim is ready to accept a validation, the PCW lights (item A) are a green double chevron. The passenger presents his card to the reader, the PCW light in the direction of authorisation will remain the double green chevron, in the opposite direction a red cross will be displayed on the PCW.

The Gull Wing DS model has extra LED tracers mounted in the top of the casework. These will pulse white in card mode, upon receiving a valid signal they will trace green in the direction of transit, see Fig for a table of events.

5.4 Alarm Conditions

Red cross PCW.

This alarm is activated when:

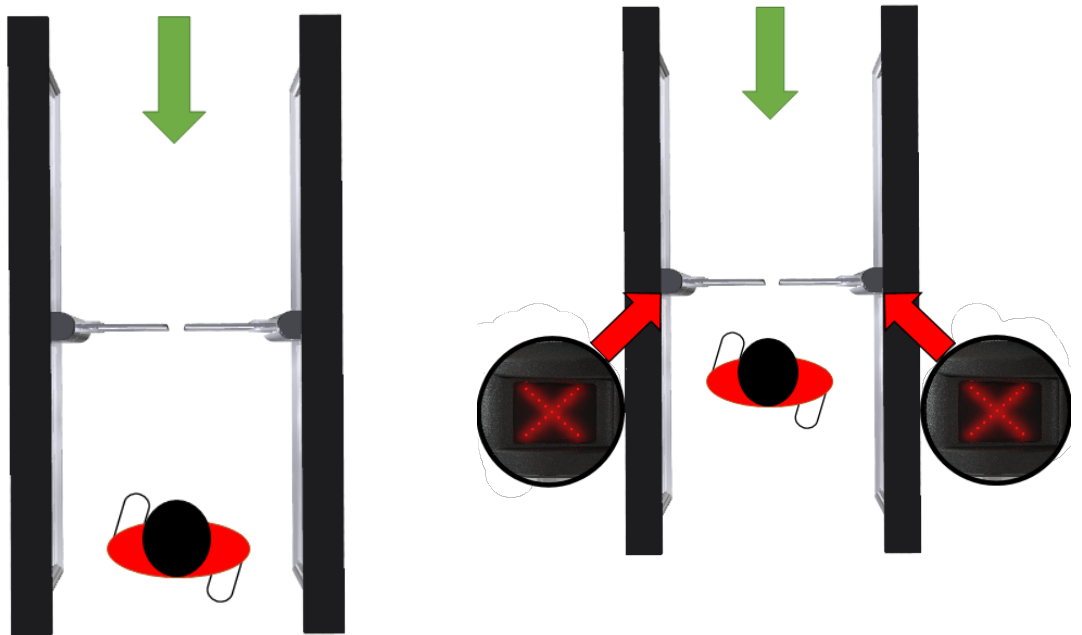
- The exit side is engaged.
- The gate is out of service.
- Flashing Red Cross PCW.

When the Gate detects an intrusion without authorisation, the lights are flashing red and, after a time out an audible alarm.

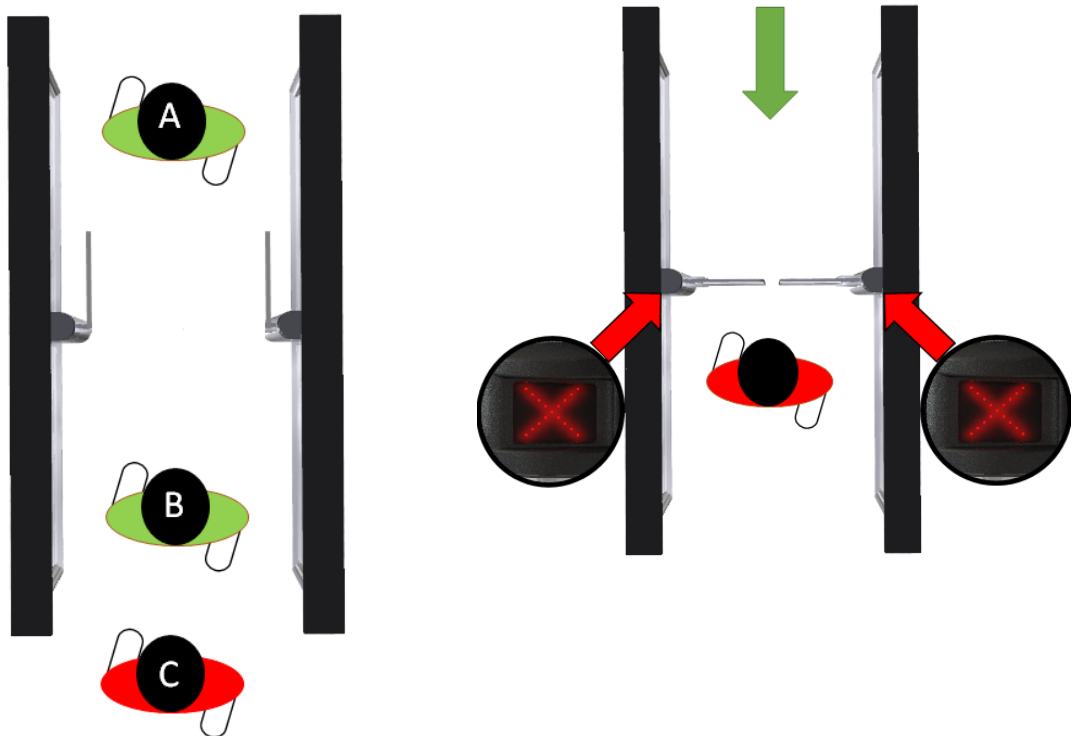
5 Operation

5.5 Wrong Way Detection

If an attempt to use the unit without permission, i.e. Against the authorised flow the wings will close.



5.6 Tailgating



- Person C attempts entrance by tailgating behind one or more authorised person (s) A and B.
- The wings will close and block the passage as soon as the un-authorized user C is detected.

- B and C must vacate the passageway.
- The wings will re-open as soon as passageway is cleared.
- At this time, B (authorised) may pass freely through passageway, their prior authorisation has been memorised by the system.

5.7 Passage management

The command logic manages all of the systems actions, which allows a person to move through the passageway. The logic uses all the information interpreted from the photocells to detect the presence and position of persons in the inside walkway.

In addition, it receives permissive signals from the readers and at the same time, provides the readers with activation and transit completed signals. It controls and regulates movement of the mechanisms and effects all related acoustic and visual warnings.

6 Servicing and maintenance

6.1 General care



CAUTION

Access to the electrical installation is strictly reserved to authorized maintenance technicians.

The Speedgate Swing Slim must be cleaned and greased at regular intervals, using the following approved materials in order to ensure a constant functioning and to extend service life.

Routine cleaning, all finishes

Cleaning agent: Soap or mild detergent water.

Action: Sponge rinse with clean water, wipe dry as necessary.

Stubborn stains and discolouration, all finishes

Cleaning agent: Mild cleaning solutions or domestic service cleaners.

Actions: Rinse well with clean water and wipe dry.

Oil, Grease marks, all finishes

Cleaning agent: Organic solvents (acetone, alcohol, genclene, trichlorethane).

Action: Clean after with soap and water, rinse well with clean water and wipe dry.

Rust and other Corrosion products, Stainless finishes

Cleaning agent: Oxalic acid. The cleaning solution should be applied with a swab and allowed to stand for 15 to 20 minutes before being washed away with water. Continue using a domestic surface cleaner to give a final clean.

Action: Rinse well with clean water (precautions for acid cleaners should be observed).

Minor scratches on painted surfaces

Cleaning agent: Lightly rub with cutting paste. Rinse area with water and dry. Apply touchup paint in fine layers.

Action: Allow 2 weeks to harden. Blend into surrounding paint work, using fine cutting paste

Deep scratches on painted finishes causing rust

Cleaning agent: Remove rust with a small sharp knife. Apply rust inhibiting paint. Fill scratch with fine body filler to just under finished surface. Follow procedure for minor scratches.

Greasing

This action is carried out by the Service Engineer during service visits.

6.2 Routine maintenance

The mechanism should be inspected and cleaned at regular intervals, in order to maintain all components correctly & to keep them in good working order. Also to check for signs of wear.



WARNING

To avoid the risk of electric shock, always ensure that the electrical power and batteries are disconnected before inspecting the mechanism.



NOTICE

The following indications refer to an installation where the average number of transits per year is equal to one million.

When used in dusty conditions, increase the inspection intervals.

Lubricants

For the lubrication of parts subject to wear, use Molycote BR2 Plus grease or equivalent grease containing graphite or molybdenum sulphide (MoS₂).

Do not grease moving parts unless specifically indicated in this manual. The use of grease can lead to a build-up of dust that can impair operation of the mechanism.

Components

Annual Checks (Operations to be carried out with the power supply disconnected).

Cables and Connectors (Operations to be carried out with the power supply disconnected).

- Check that the wire connectors are firmly attached.
- Check that the terminals are fully tightened.
- Check that the insulation of the wires is in good condition and that no conductors are exposed.

Electrical Circuits

No general Maintenance is required apart from replacement fuses in the event of a failure.

7 Malfunctions

7.1 Fault Finding

During normal operation, the main control logic GC01 displays a collection of messages regarding the normal status or the fault conditions. To read the messages displayed by the GC01 is the first check to do in case of failure of the Speedgate Flap

Symptom	Check	Action
Panels do not drive	Check mains input voltage and 24 VDC supply on logic boards	Replace transformer
	Fuses on all three logic boards	Replace as required Increase back-off sensitivity If F1 fuse has blown motor may be permanently damaged
	Check functionality of all the logic boards on each electrical plate, especially MB01 drive cards	Re Flash Firmware Perform a re learn Replace as required
	Card reader inputs	Remove card reader connections and link across the inputs
	Photocells, perform diagnostic test using GC01 to check that all the photocells are working	Replace faulty photocell(s) if required Check brackets
Unit alarms	Battery back up	If fitted the cells may be in need of replacement. If they are not fitted the self-test function should be disabled by changing the relevant parameter Check looms.
Panels do not close after transit	Safety photocell	Replace if required
Panel(s) do not back off when obstructed	Trimmer on MB01 drive card	Tune the obstacle sensitivity. Replace MB01
Panel(s) pulses when in open or close position	Trimmers on MB01 drive card	Tune the offsets. Replace drive card if required
Panel(s) do not open and close correctly	Trimmers on MB01 drive card	Launch the learning procedure. Replace drive card if required
	Encoders	Replace if required Check encoder mounted correctly Check looms Check Mech setting
Panel(s) open and close very fast.	Encoders, and encoder looms	Replace if required Check encoder mounted correctly Check looms Check Mech Setting
	Incorrect mechanism selected	Adjust on MB01 board

7.2 Fault diagnosis

The diagnostic module is capable of signalling a fault condition through the following channels:

- Buzzer
- 7 segment display on the NEP Lite board.
- Serial line protocol

The diagnostic module is capable of monitoring the following sub systems

- Passage Sensors
- Motor driver
- Motor encoder

For each sub system the diagnostic gathers the following information

- Fault category (or sub system with the issue)
- Board address
- Fault code

On the NEP Lite 7 segment display the faults are shown one by one in the following format

F	Adress	Cat	Code
F	F is a fixed character and stands for fault.		
Adress	Address is the side the fault is generated from either Master or Slave.		
Cat	Cat is the fault category and is represented by a single letter (See fault code tables).		
Code	Code is a number from 0-255 and is specific to the fault category (See fault code tables).		
0	Master		
1	Slave		

7.3 Fault code tables

Cat Codes

Cat	Description
D	Motor drive
E	Encoder
P	Sensors

Motor Drive Fault Codes (d)

Dec code	Hex code	Description
1	1	Mechanism PAR_MECHANIS M_TY PE is out of range.
2	2	Motor drive cannot be initialised.
3	3	Encoder cannot be initialised.
4	4	Encoder module fails.

Encoder (d)

Dec code	Hex code	Description
1	01	Channel #1 too low or position below min
2	02	Channel #1 too high or position above max.
4	04	Encoder channel cannot be initialised.
8	08	Channel difference too low.
9	09	Channel #1 too low and channel difference too low.
10	0A	Channel #1 too high and channel difference too low.
16	10	Channel #2 too low.
17	11	Channels #1 and #2 too low.
18	12	Channel #1 too high and channel #2 too low.
24	18	Channel difference too low and channel #2 too low.
32	20	Channel #2 too high.

7 Malfunctions

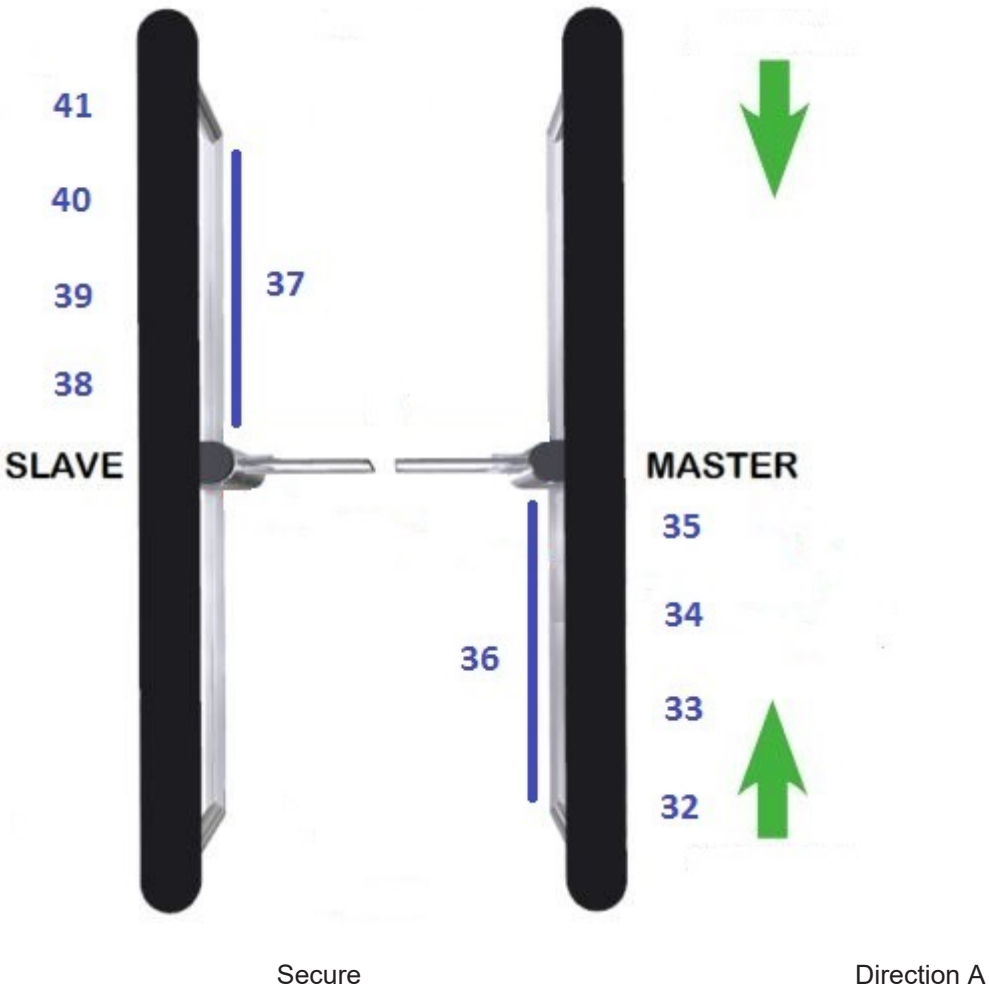
Dec code	Hex code	Description
33	21	Channel #1 too low and channel #2 too high.
34	22	Channels #1 and #2 too high.
40	28	Channel difference too low and channel #2 too high.
41	29	Channel #1 too low, channel #2 too high, and channel difference too low.
42	2A	Channels #1 and #2 too high and channel difference too low.
128	80	Channel difference too high.
129	81	Channel #1 too low and channel difference too high.
130	82	Channel #1 too high and channel difference too high.
144	90	Channel #2 too low and channel difference too high.
145	91	Channels #1 and #2 too low and channel difference too high.
146	92	Channel #1 too high, channel #2 too low, and channel difference too high.
160	A0	Channel #2 too high and channel difference too high.
161	A1	Channel #1 too low, channel #2 too high, and channel difference too high.
162	A2	Channels #1 and #2 too high and channel difference too high.

Sensors (p)

Dec code	Hex code	Description
1	1	At least one passage sensor failed test #1
32	20	Passage sensor #1 failed test #2
33	21	Passage sensor #2 failed test #2
34	22	Passage sensor #3 failed test #2
35	23	Passage sensor #4 failed test #2
36	24	Passage sensor #5 failed test #2
37	25	Passage sensor #6 failed test #2
38	26	Passage sensor #7 failed test #2
39	27	Passage sensor #8 failed test #2
40	28	Passage sensor #9 failed test #2
41	29	Passage sensor #10 failed test #2

Non secure

Direction B



8 Taking out of service and disposal

8 Taking out of service and disposal

8.1 Decommissioning

When shutting down or taking out of service, the system is disconnected from the mains supply and any existing battery is unplugged.



NOTICE

After each temporary shutdown a new commissioning must be carried out.

8.2 Dismantling and disposal



IMPORTANT

All machine parts must be sorted by type of material and disposed of according to local regulations and guidelines.



NOTICE

The door systems can be completely disassembled in reverse order.

The automatic door mainly consists of the following materials:

Aluminum:

- Linking profiles
- Gearbox, Drive panel
- Door wing profiles and side profiles
- Various profiles and small parts

Steel / iron parts:

- Stainless steel casing, Floor panel, Box recess for floor installation
- Optional spacer or reinforcement profiles
- Gear components, springs
- Various small parts like fittings, covers, linking parts, etc.

Glass:

- Door wings and side panels

Various electronic and electromechanical components:

- Sensors, control and operator components
- Lead batteries and nickel-cadmium rechargeable batteries

Various plastics:

- Rollers
- Cable clips, coupling and linking parts
- Sealing profiles
- Casing of electromechanical components and sensors

 **Australia**
www.recorddoors.com.au

 **Canada**
www.recorddoors.com

 **China**
www.record.net.cn

 **Deutschland**
www.record.de

 **Denmark**
www.record-danmark.dk

 **España**
www.record.es

 **France**
www.record.fr

 **Great Britain**
www.recorduk.co.uk

 **Malaysia**
www.recorddoors.my

 **Polska**
pl.record.global

 **Schweiz**
www.record.ch

 **Sverige**
www.record.se

 **Türkiye**
tr.record.global

 **United States**
www.recorddoors.com

 **record global export**
www.record.global

 **record Group**
www.record.group